

[View on rigaku.com](https://www.rigaku.com)

XRF1121 - Quantitative analysis of cast iron using ZSX Primus III NEXT

Introduction

Cast iron is important engineering material such as for machines and automotive industry parts. Cast iron is often manufactured in electric induction furnaces. There are various types of cast irons such as grey cast iron, ductile cast iron and Ni-resist cast iron. Specific property of each cast iron is controlled by the concentrations of alloying elements. Therefore, the rapid elemental analysis of the alloying elements including carbon and silicon for controlling composition of molten metal in furnaces is crucial for the quality control in the cast iron production. Sand casting molds are mostly used for casting cast iron. The elemental analysis of casting sands such as silica sand and olivine sand is also required to check the quality of recycled casting sands.

The X-ray fluorescence spectrometer ZSX Primus III NEXT can cover all necessary elemental analyses from carbon for various kinds of cast iron and casting sand. This note describes the application of cast iron analysis including ductile cast iron.

Instrument

The ZSX Primus III NEXT has tube above optics, where the X-ray tube is placed above the sample, Tube above optics reduces the risk of instrument contamination or damage that can occur when pressed pellet breaks inside the spectrometer while being measured or transported to the measurement position.

The ZSX Primus III NEXT is ideal for the steel industry where both bulk metal and powder samples are analyzed as part of the process protocol during the manufacture of iron steel. The system software is based on Rigaku's Flowbar interface that leads the user through a series of step-by-step procedures to optimize and execute measurements. "EZ analysis", another Rigaku software innovation greatly simplifies the analysis setup and sample measurement. In addition, the software has various kinds of statistical process control functions ideal for the steel industry.

Standard and sample preparation

The certified standard reference materials of cast iron provided by TOYO-KOGYO were used to establish the calibration. The samples were polished using a grinding stone machine with 46-grit corundum abrasive stone.

Measurement and calibration method

Measurements were performed using the ZSX Primus III NEXT with a 3 kW Rh target X-ray tube. The K α line was measured for all the elements at a counting time of 40 seconds for carbon and magnesium, the other elements was measured for 20 seconds.

A LiF(200) analyzing crystal and scintillation counter were used for all the heavy elements from Cr to Mo.

A PET crystal was used for Si and an optional Ge crystal was used to provide high resolution for the measurement of P and S.

RX61 and RX26 synthetic multilayers were used for C and Mg respectively.

The gas flow proportional counter was used for all the light elements.

The calibration curves obtained are shown in Figure 1 through Figure 10.

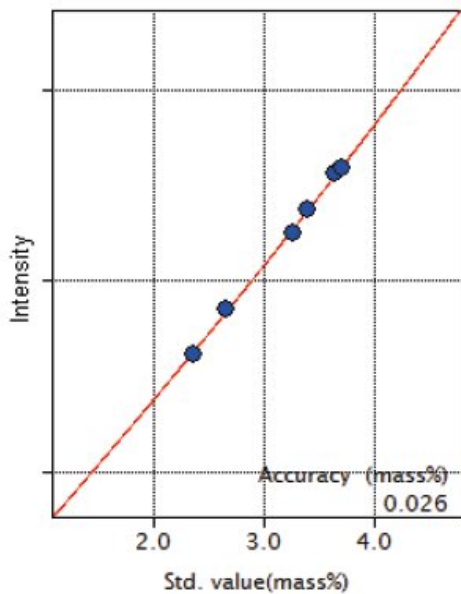


Figure 1: Calibration curve of C

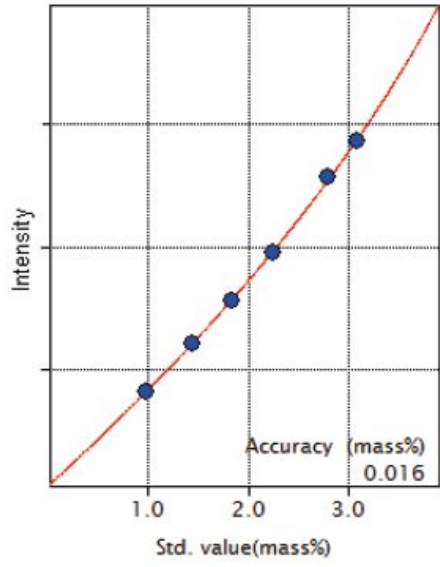


Figure 2: Calibration curve of Si

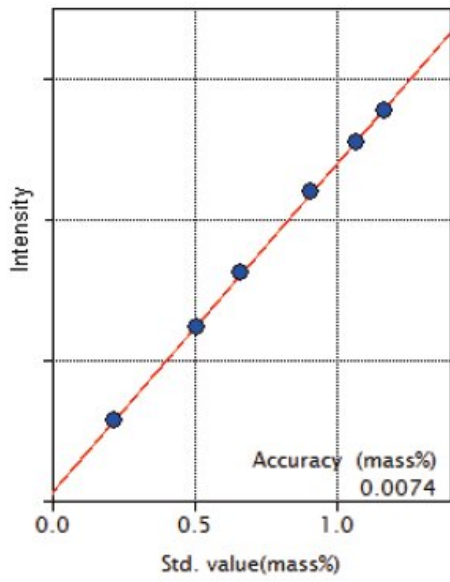


Figure 3: Calibration curve of Mn

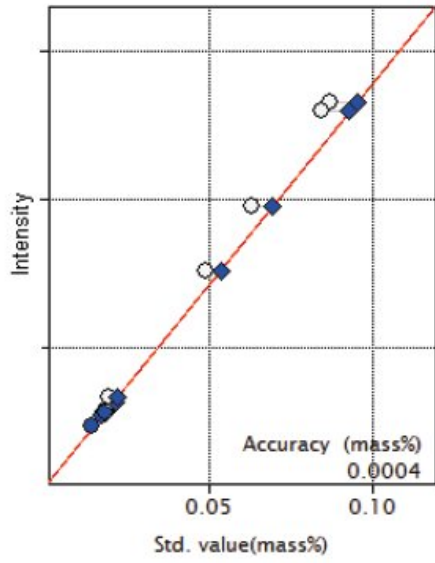


Figure 4: Calibration curve of P

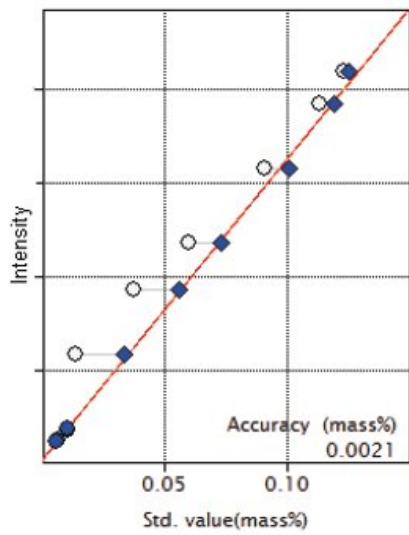


Figure 5: Calibration curve of S

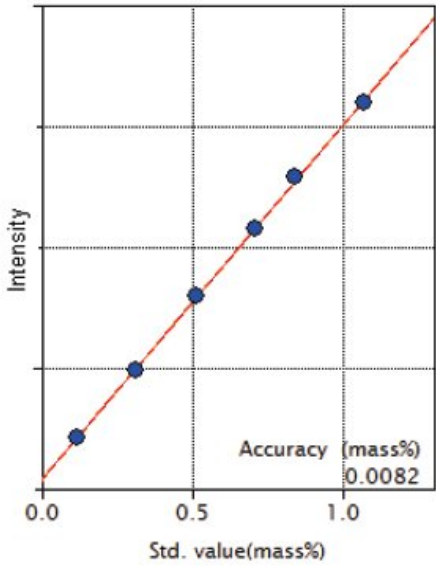


Figure 6: Calibration curve of Cu

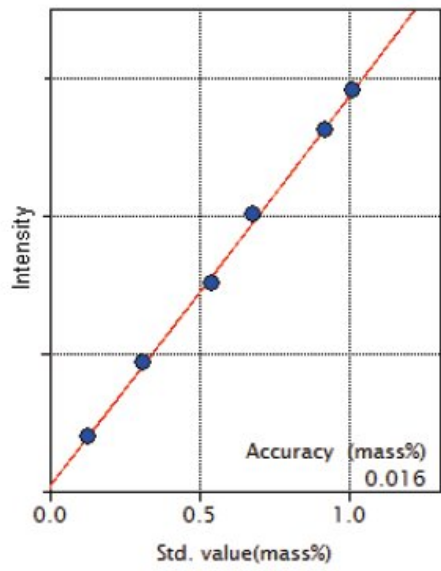


Figure 7: Calibration curve of Cr

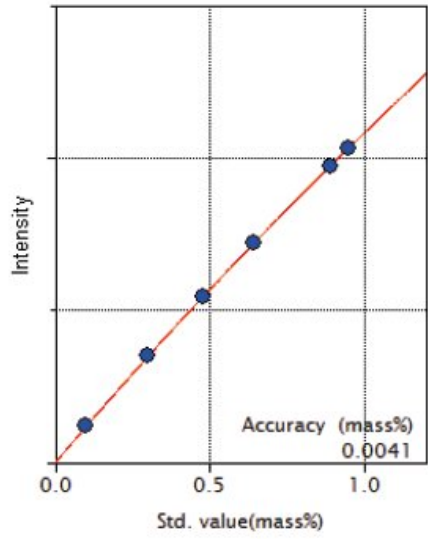


Figure 8: Calibration curve of Mo

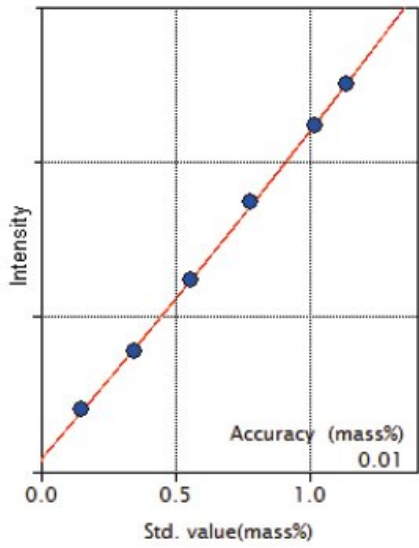


Figure 9: Calibration curve of Ni

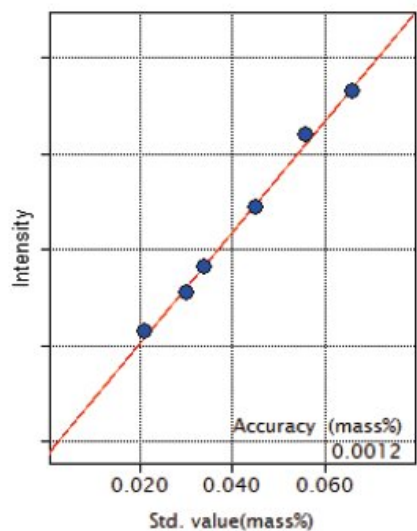


Figure 10: Calibration curve of Mg

As shown in the Figure 1, the good linear calibration curve of C for the concentration range from 2.35 to 3.69 mass% was obtained using the high reflectivity synthetic multilayer RX61 for C.

A trace amount of Mg is added to ductile cast iron. The RX26 is an optimum synthetic multilayer for the analysis of trace magnesium in cast iron and high sensitivity calibration was obtained as shown in Figure 10.

Results

The accuracy of the calibration curves is listed in Table 1 and the repeatability test results (10 times) are indicated in Table 2.

Table 1: Accuracy of calibration curves (unit : mass%)

Component	Concentration range	Accuracy
C	2.35 – 3.69	0.026
Si	0.98 – 3.08	0.016
Mn	0.22 – 1.17	0.0074
P	0.019 – 0.087	0.00040
S	0.014 – 0.123	0.0021
Cu	0.12 – 1.07	0.0082
Cr	0.13 – 1.01	0.016
Mo	0.10 – 0.95	0.0041
Ni	0.15 – 1.14	0.010
Mg	0.021 – 0.066	0.0012

Table 2: Result of repeatability (unit : mass%)

Component	Average	Std dev.	RSD%	Sample
C	3.23	0.0078	0.24	7-14
Si	2.24	0.0027	0.12	7-14
Mn	0.67	0.00074	0.11	7-14
P	0.049	0.00042	0.85	7-14
S	0.087	0.00053	0.61	7-14
Cu	0.52	0.00114	0.22	7-14
Cr	0.70	0.00087	0.13	7-14
Mo	0.47	0.00038	0.08	7-14
Ni	0.79	0.0015	0.19	7-14
Mg	0.030	0.00074	2.45	3-13b

The accuracy is calculated by the following formula:

$$Accuracy = \sqrt{\frac{\sum_i (C_i - \hat{C}_i)^2}{n-m}}$$

C_i : calculated value of standard sample

\hat{C}_i : reference value of standard sample

n : number of standard samples.

m: degree of freedom (linear 2, quad. 3)

Conclusions

The results demonstrate that high precision and accurate analysis of the elements in cast iron can be performed using ZSX Primus III NEXT and that the spectrometer can be used for total analysis from z =6, carbon for cast iron analysis. It is also possible to analyze alloyed Ni-Resist cast iron and casting sands with good precision using the ZSX Primus III NEXT, which is an optimized X-ray spectrometer for process control of ferrous foundry.

Related products



ZSX Primus III NEXT

Affordable, high-end, tube-above Industrial WDXRF for the analysis of solid samples